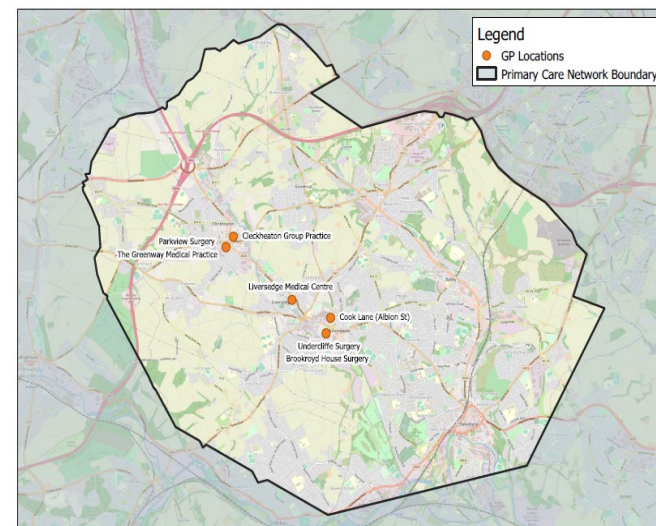


North Kirklees CCG Primary Care Networks

Spen Health And Wellbeing (Primary Care) Network (SHAWN)

Network	Registration Form Received on Time	Network Agreement Schedule 1 Received and Verified	Mandatory Network Agreement Received and Verified	Mandatory Network Agreement Signed by all Practices	All Network Member Practices Named	PCN List Sizes and ODS codes completed	PCN List Sizes and ODS codes match records	Network List size correct (sum of list sizes) at 1 Jan 2019	Clinical Director Agreed	Practicing Clinician within PCN	Method of CD Selection	PCN funding Recipient type	Funding Recipient holds a Primary Care Contract	Bank account detail verified as accurate with Finance
Spen Health And Wellbeing (Primary Care) Network - SHAWN	Yes	Yes	Yes	Yes	Yes	Yes	Yes	Yes	Yes	Yes	Election - nomination and voting;	Provider (Signatory of PCN Registration)	Yes	Yes

Network	Clinical Director	CCG Primary Care Lead	Practice Code	Practices	List Size (Raw at Jan 2019)	List Size
Spen Health And Wellbeing (Primary Care) Network - SHAWN	Dr Imad Riaz	Chris Nicholls	B85021	Cleckheaton Group Practice	9,753	52,604
			B85619	Cook Lane (Albion St)	2,837	
			B85612	Liversedge Medical Centre	3,479	
			B85001	Parkview Surgery	7,628	
			B85030	The Greenway Medical Practice	8,297	
			B85014	Brookroyd House Surgery	9,612	
			B85012	Undercliffe Surgery	10,998	



Actions	YES	NO
Does this network registration meet all minimum requirements	X	
Is it recommended that PCCC verify this networks registration	X	
Are there outstanding issues Relating to this Network		X
Are the LMC aware of the outstanding issue	NA	
Are there any further Comments:		

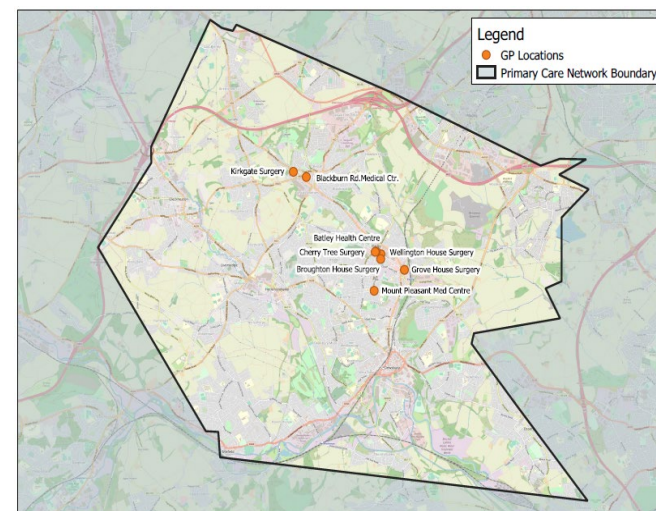
Actions	YES	NO
Is the Population criteria 30,000 -50,000		X
Does the Network area cover a boundary that makes sense to it:		
• Constituent Practices	X	
• Partners	X	
• Local Community	X	

The network is deemed to be of a viable, sustainable and manageable size. Please refer to 'Exceptional Issue (3) - Network population size criteria'

Batley Birstall Primary Care Network

Network	Registration Form Received on Time	Network Agreement Schedule 1 Received and Verified	Mandatory Network Agreement Received and Verified	Mandatory Network Agreement Signed by all Practices	All Network Member Practices Named	PCN List Sizes and ODS codes completed	PCN List Sizes and ODS codes match records	Network List size correct (sum of list sizes) at 1 Jan 2019	Clinical Director Agreed	Practicing Clinician within PCN	Method of CD Selection	PCN funding Recipient type	Funding Recipient holds a Primary Care Contract	Bank account detail verified as accurate with Finance
Batley Birstall Primary Care Network	Yes	Yes	Yes	Yes	Yes	Yes	Yes	Yes	Yes	Yes	Mutual agreement between the members;	Provider (Signatory of PCN Registration)	Yes	Yes

Network	Clinical Director	CCG Primary Care Lead	Practice Code	Practices	List Size (Raw at Jan 2019)	List Size
Batley Birstall Primary Care Network	Dr C Ratcliffe	Natalie Sykes	B85655	Cherry Tree Surgery	2,479	59,506
			B85640	Kirkgate Surgery	3,345	
			B85622	Broughton House Surgery	3,752	
			B85008	Batley Health Centre	5,051	
			B85018	Grove House Surgery	9,114	
			B85015	Wellington House Surgery	8,981	
			B85025	Blackburn Rd. Medical Ctr.	11,836	
			B85041	Mount Pleasant Med Centre	14,948	



Actions	YES	NO
Does this network registration meet all minimum requirements	X	
Is it recommended that PCCC verify this networks registration	X	
Are there outstanding issues Relating to this Network		X
Are the LMC aware of the outstanding issue	NA	
Are there any further Comments:		

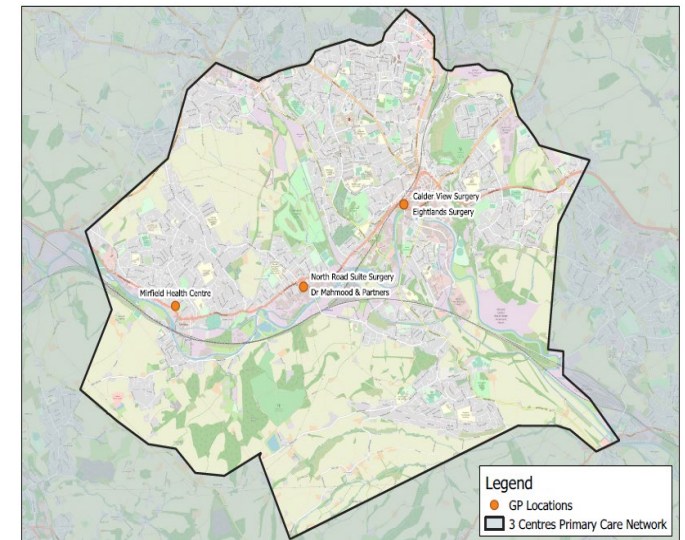
Actions	YES	NO
Is the Population criteria 30,000 -50,000		X
Does the Network area cover a boundary that makes sense to it:		
• Constituent Practices	X	
• Partners	X	
• Local Community	X	

The network is deemed to be of a viable, sustainable and manageable size. Please refer to 'Exceptional Issue (3) - Network population size criteria'

3 Centres Primary Care Network

Network	Registration Form Received on Time	Network Agreement Schedule 1 Received and Verified	Mandatory Network Agreement Received and Verified	Mandatory Network Agreement Signed by all Practices	All Network Member Practices Named	PCN List Sizes and ODS codes completed	PCN List Sizes and ODS codes match records	Network List size correct (sum of list sizes) at 1 Jan 2019	Clinical Director Agreed	Practicing Clinician within PCN	Method of CD Selection	PCN funding Recipient type	Funding Recipient holds a Primary Care Contract	Bank account detail verified as accurate with Finance
3 Centres Primary Care Network	Yes	Yes	Yes	Yes	Yes	Yes	Yes	Yes	Yes	Yes	Election - nomination and voting;	Provider (Signatory of PCN Registration)	Yes	Yes

Network	Clinical Director	CCG Primary Care Lead	Practice Code	Practices	List Size (Raw at Jan 2019)	List Size
3 Centres Primary Care Network	Dr M Hussain	Joanne Davis	B85650	Dr Mahmood & Partners	4,217	42,478
			B85004	Calder View Surgery	5,488	
			B85020	Eightlands Surgery	6,704	
			B85009	North Road Suite Surgery	8,712	
			B85019	Mirfield Health Centre	17,357	



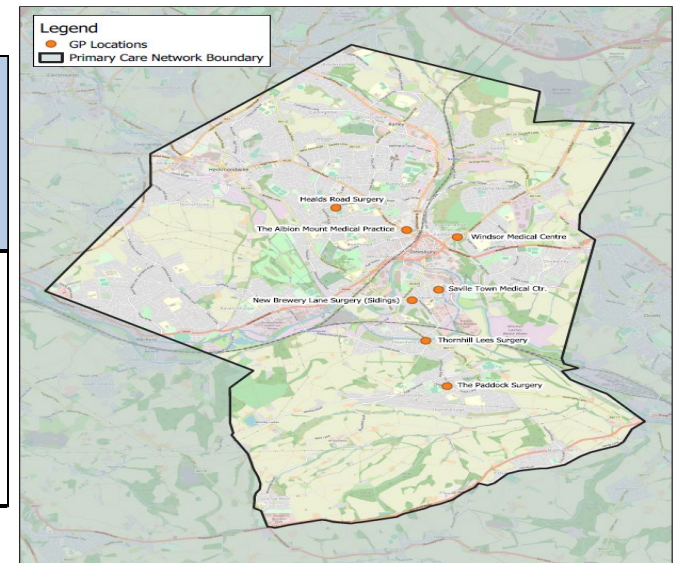
Actions	YES	NO
Does this network registration meet all minimum requirements	X	
Is it recommended that PCCC verify this networks registration	X	
Are there outstanding issues Relating to this Network		X
Are the LMC aware of the outstanding issue	NA	
Are there any further Comments:		

Actions	YES	NO
Is the Population criteria 30,000 -50,000	X	
Does the Network area cover a boundary that makes sense to it:		
• Constituent Practices	X	
• Partners	X	
• Local Community	X	

Dewsbury & Thornhill Primary Care Network

Network	Registration Form Received on Time	Network Agreement Schedule 1 Received and Verified	Mandatory Network Agreement Received and Verified	Mandatory Network Agreement Signed by all Practices	All Network Member Practices Named	PCN List Sizes and ODS codes completed	PCN List Sizes and ODS codes match records	Network List size correct (sum of list sizes) at 1 Jan 2019	Clinical Director Agreed	Practicing Clinician within PCN	Method of CD Selection	PCN funding Recipient type	Funding Recipient holds a Primary Care Contract	Bank account detail verified as accurate with Finance
Dewsbury & Thornhill Primary Care Network	Yes	Yes	Yes	Yes	Yes	Yes	Yes	Yes	Yes	Yes	Mutual agreement between the members;	Provider (Signatory of PCN Registration)	Yes	Yes

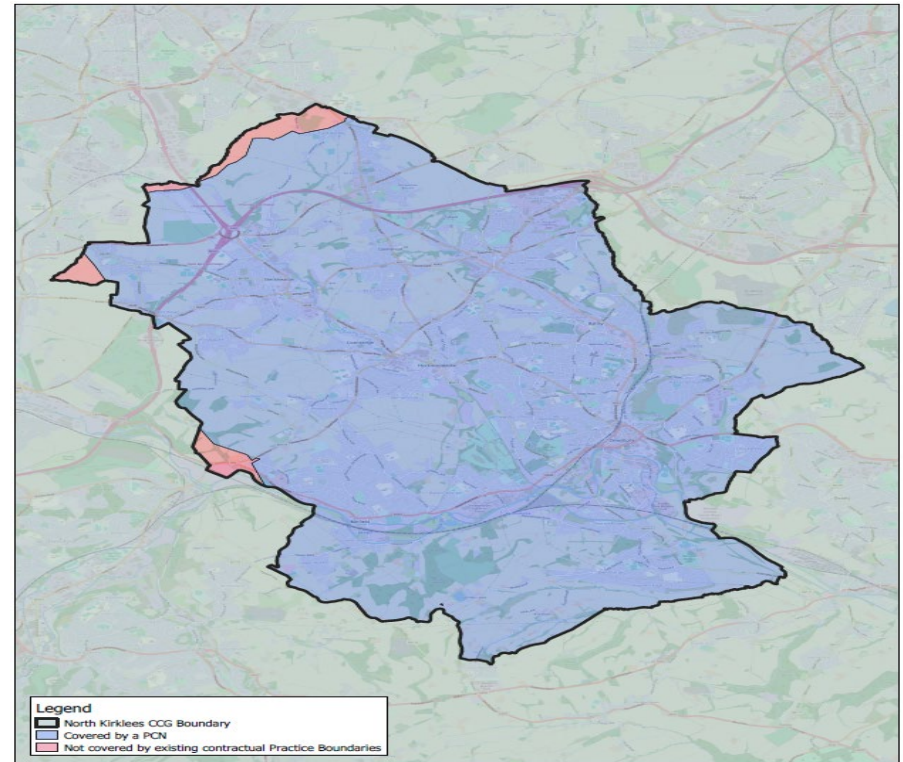
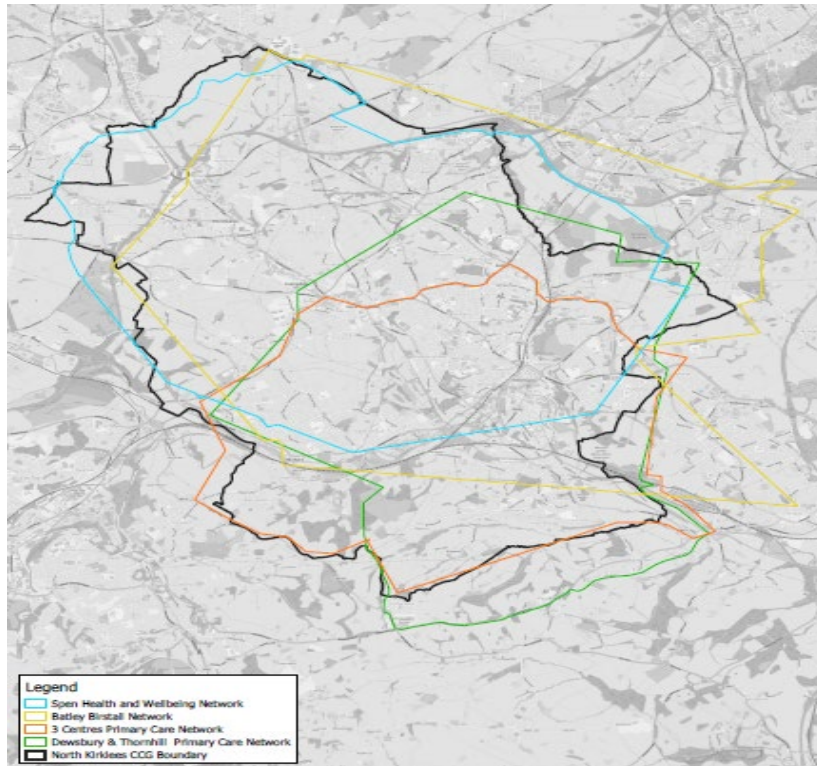
Network	Clinical Director	CCG Primary Care Lead	Practice Code	Practices	List Size (Raw at Jan 2019)	List Size
Dewsbury & Thornhill Primary Care Network	Dr Indira Kasibhatla	Chris Nicholls	885645	Savile Town Medical Ctr.	2,804	40,019
			885606	Thornhill Lees Surgery	4,822	
			885038	The Paddock Surgery	5,827	
			885646	The Albion Mount Medical Practice	6,564	
			885652	New Brewery Lane Surgery (Sidings)	7,757	
			885620	Windsor Medical Centre	2,034	
			885055	Healds Road Surgery	10,211	



Actions	YES	NO
Does this network registration meet all minimum requirements	X	
Is it recommended that PCCC verify this networks registration	X	
Are there outstanding issues Relating to this Network		X
Are the LMC aware of the outstanding issue	NA	
Are there any further Comments:		

Actions	YES	NO
Is the Population criteria 30,000 -50,000	X	
Does the Network area cover a boundary that makes sense to it:		
• Constituent Practices	X	
• Partners	X	
• Local Community	X	

North Kirklees CCG Primary Care Networks



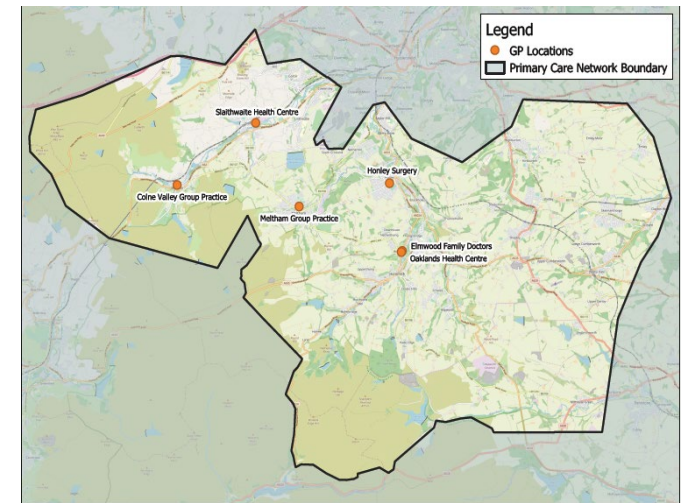
Actions	YES	NO	Comments
Primary Care Commissioning Committee is specifically required to approve all PCN registration applications at one time to ensure that:			
100% of its geographical area is included within Primary Care Networks		x	Please refer to 'Exceptional Issue (1) – 100% Geographical Coverage in North Kirklees
Every constituent practice of a CCG is covered	x		
100% of the registered population is included within a network		x	Please refer to 'Exceptional Issue (2) - Special Allocation
The registered population of each network 30,000 -50,000		x	Please refer to 'Exceptional Issue (3) - Network population size criteria'
Any further comments required			

Greater Huddersfield CCG Primary Care Networks

The Valleys Health and Social Care Network

Network	Registration Form Received on Time	Network Agreement Schedule 1 Received and Verified	Mandatory Network Agreement Received and Verified	Mandatory Network Agreement Signed by all Practices	All Network Member Practices Named	PCN List Sizes and ODS codes completed	PCN List Sizes and ODS codes match records	Network List size correct (sum of list sizes) at 1 Jan 2019	Clinical Director Agreed	Practicing Clinician within PCN	Method of CD Selection	PCN funding Recipient type	Funding Recipient holds a Primary Care Contract	Bank account detail verified as accurate with Finance
The Valleys Health and Social Care Network	Yes	Yes	Yes	Yes	Yes	Yes	Yes	Yes	Yes	Yes	Election - nomination and voting;	Single Practice within PCN	Yes	Yes

Network Summary	Clinical Director	CCG Primary Care Lead	Practice Code	Practices	List Size (Raw at Jan 2019)	List Size
The Valleys Health and Social Care Network	Dr Dil Ashraf	Sarah Rothery	B85610	Oaklands Health Centre	9,782	54,105
			B85022	Honley Surgery	7,665	
			B85006	Elmwood Family Doctors	14,610	
			B85059	Slaithwaite Health Centre	5,471	
			B85032	Meltham Group Practice	6,355	
			B85054	Colne Valley Group Practice	10,222	



Actions	YES	NO
Does this network registration meet all minimum requirements	X	
Is it recommended that PCCC verify this networks registration	X	
Are there outstanding issues Relating to this Network		X
Are the LMC aware of the outstanding issue	NA	
Are there any further Comments:		

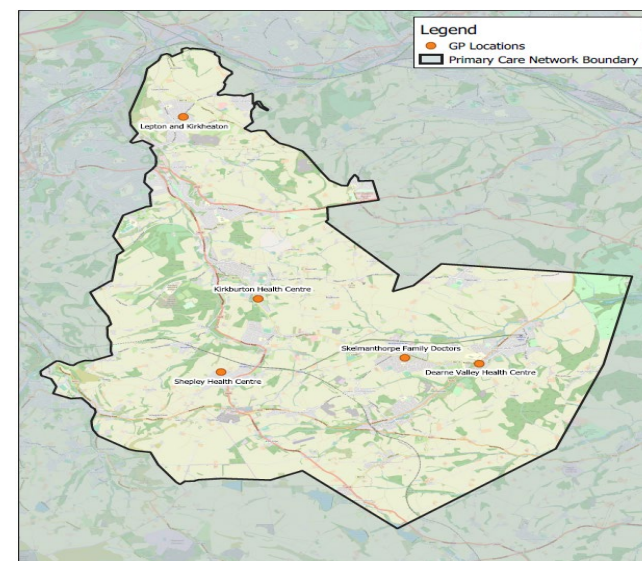
Actions	YES	NO
Is the Population criteria 30,000 -50,000		X
Does the Network area cover a boundary that makes sense to it:		
• Constituent Practices	X	
• Partners	X	
• Local Community	X	

The network is deemed to be of a viable, sustainable and manageable size. Please refer to 'Exceptional Issue (4) - Network population size criteria'

The Mast Primary Care Network

Network	Registration Form Received on Time	Network Agreement Schedule 1 Received and Verified	Mandatory Network Agreement Received and Verified	Mandatory Network Agreement Signed by all Practices	All Network Member Practices Named	PCN List Sizes and ODS codes completed	PCN List Sizes and ODS codes match records	Network List size correct (sum of list sizes) at 1 Jan 2019	Clinical Director Agreed	Practicing Clinician within PCN	Method of CD Selection	PCN funding Recipient type	Funding Recipient holds a Primary Care Contract	Bank account detail verified as accurate with Finance
The Mast Primary Care Network	Yes	Yes	Yes	Yes	Yes	Yes	Yes	Yes	Yes	Yes	Mutual agreement between the members;	Single Practice within PCN	Yes	Yes

Network Summary	Clinical Director	CCG Primary Care Lead	Practice Code	Practices	List Size (Raw at Jan 2019)	List Size
The Mast Primary Care Network	Dr Louise James	Diane Lane	B85002	Dearne Valley Health Centre	3,939	35,120
			B85061	Skelmanthorpe Family Doctors	9,434	
			B85031	Lepton and Kirkheaton	7,101	
			B85026	Kirkburton Health Centre	8,107	
			B85005	Shepley Health Centre	6,539	



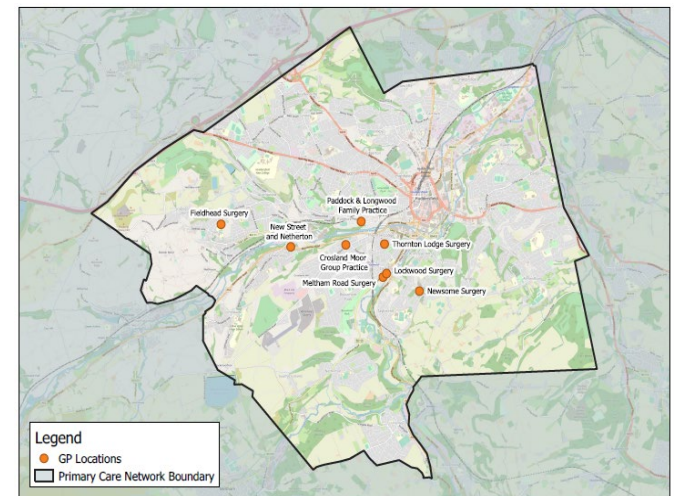
Actions	YES	NO
Does this network registration meet all minimum requirements	X	
Is it recommended that PCCC verify this networks registration	X	
Are there outstanding issues Relating to this Network		X
Are the LMC aware of the outstanding issue	NA	
Are there any further Comments:		

Actions	YES	NO
Is the Population criteria 30,000 -50,000	X	
Does the Network area cover a boundary that makes sense to it:		
• Constituent Practices	X	
• Partners	X	
• Local Community	X	

Viaduct Care Network

Network	Registration Form Received on Time	Network Agreement Schedule 1 Received and Verified	Mandatory Network Agreement Received and Verified	Mandatory Network Agreement Signed by all Practices	All Network Member Practices Named	PCN List Sizes and ODS codes completed	PCN List Sizes and ODS codes match records	Network List size correct (sum of list sizes) at 1 Jan 2019	Clinical Director Agreed	Practicing Clinician within PCN	Method of CD Selection	PCN funding Recipient type	Funding Recipient holds a Primary Care Contract	Bank account detail verified as accurate with Finance
The Viaduct Care Network	Yes	Yes	Yes	Yes	Yes	Yes	Yes	Yes	Yes	Yes	Election - nomination and voting;	Single Practice within PCN	Yes	Yes

Network Summary	Clinical Director	CCG Primary Care Lead	Practice Code	Practices	List Size (Raw at Jan 2019)	List Size
The Viaduct Care Network	Dr Hannah Ruth Hayward	Jan Giles	B85036	New Street and Netherton	7,420	52,364
			B85016	Meltham Road Surgery	9,966	
			B85044	Thornton Lodge Surgery	2,517	
			B85051	Fieldhead Surgery	8,775	
			Y04266	Crosland Moor Group Practice	4,038	
			B85037	Newsome Surgery	6,215	
			B85042	Paddock & Longwood Family Practice	8,703	
			B85641	Lockwood Surgery	4,730	



Actions	YES	NO
Does this network registration meet all minimum requirements	X	
Is it recommended that PCCC verify this networks registration	X	
Are there outstanding issues Relating to this Network		X
Are the LMC aware of the outstanding issue	NA	
Are there any further Comments:		

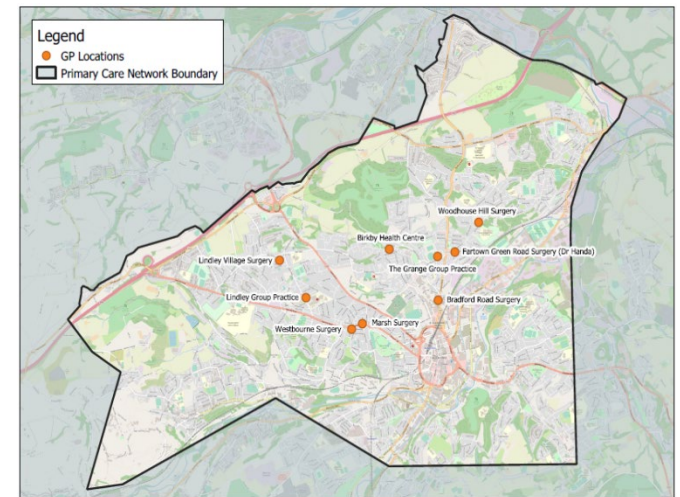
Actions	YES	NO
Is the Population criteria 30,000 -50,000		X
Does the Network area cover a boundary that makes sense to it:		
• Constituent Practices	X	
• Partners	X	
• Local Community	X	

The network is deemed to be of a viable, sustainable and manageable size. Please refer to 'Exceptional Issue (4) - Network population size criteria'

Greenwood Network

Network	Registration Form Received on Time	Network Agreement Schedule 1 Received and Verified	Mandatory Network Agreement Received and Verified	Mandatory Network Agreement Signed by all Practices	All Network Member Practices Named	PCN List Sizes and ODS codes completed	PCN List Sizes and ODS codes match records	Network List size correct (sum of list sizes) at 1 Jan 2019	Clinical Director Agreed	Practicing Clinician within PCN	Method of CD Selection	PCN funding Recipient type	Funding Recipient holds a Primary Care Contract	Bank account detail verified as accurate with Finance
Greenwood Network	Yes	Yes	Yes	Yes	Yes	Yes	Yes	Yes	Yes	Yes	Mutual agreement between the members;	Single Practice within PCN	Yes	Yes

Network Summary	Clinical Director	CCG Primary Care Lead	Practice Code	Practices	List Size (Raw at Jan 2019)	List Size
Greenwood Network	Dr Jane Ford	Jen Love	B85028	The Grange Group Practice	15,905	57,914
			B85048	Woodhouse Hill Surgery	3,618	
			B85611	Fartown Green Road Surgery (Dr Handa)	3,741	
			B85614	Bradford Road Surgery	5,168	
			B85623	Marsh Surgery	3,000	
			B85636	Westbourne Surgery	3,695	
			B85033	Lindley Village Surgery	4,892	
			B85027	Lindley Group Practice	10,891	
			B85634	Birkby Health Centre	3,553	
				Nook Surgery & Clifton Group	3,451	



Actions	YES	NO
Does this network registration meet all minimum requirements	X	
Is it recommended that PCCC verify this networks registration	X	
Are there outstanding issues Relating to this Network		X
Are the LMC aware of the outstanding issue	NA	
Are there any further Comments:		

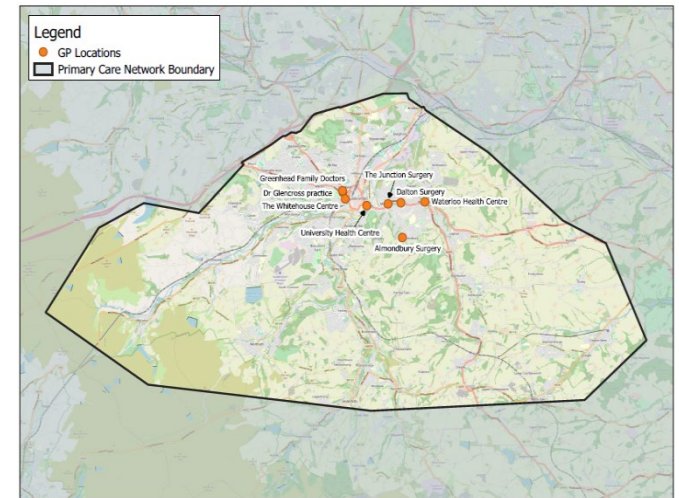
Actions	YES	NO
Is the Population criteria 30,000 -50,000		X
Does the Network area cover a boundary that makes sense to it:		
• Constituent Practices	X	
• Partners	X	
• Local Community	X	

The network is deemed to be of a viable, sustainable and manageable size. Please refer to 'Exceptional Issue (4) - Network population size criteria'

Tolson Care Partnership

Network	Registration Form Received on Time	Network Agreement Schedule 1 Received and Verified	Mandatory Network Agreement Received and Verified	Mandatory Network Agreement Signed by all Practices	All Network Member Practices Named	PCN List Sizes and ODS codes completed	PCN List Sizes and ODS codes match records	Network List size correct (sum of list sizes) at 1 Jan 2019	Clinical Director Agreed	Practicing Clinician within PCN	Method of CD Selection	PCN funding Recipient type	Funding Recipient holds a Primary Care Contract	Bank account detail verified as accurate with Finance
Tolson Care Partnership	Yes	Yes	Yes	No	Yes	Yes	No	Yes	Yes	Yes	Election - nomination and voting;	Single Practice within PCN	Yes	Yes

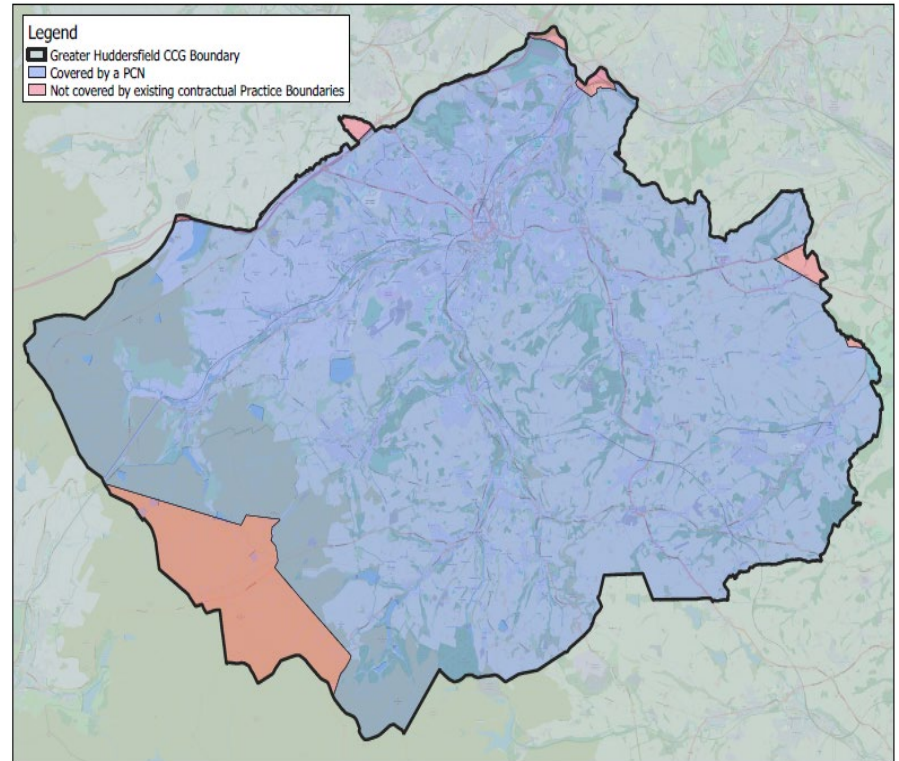
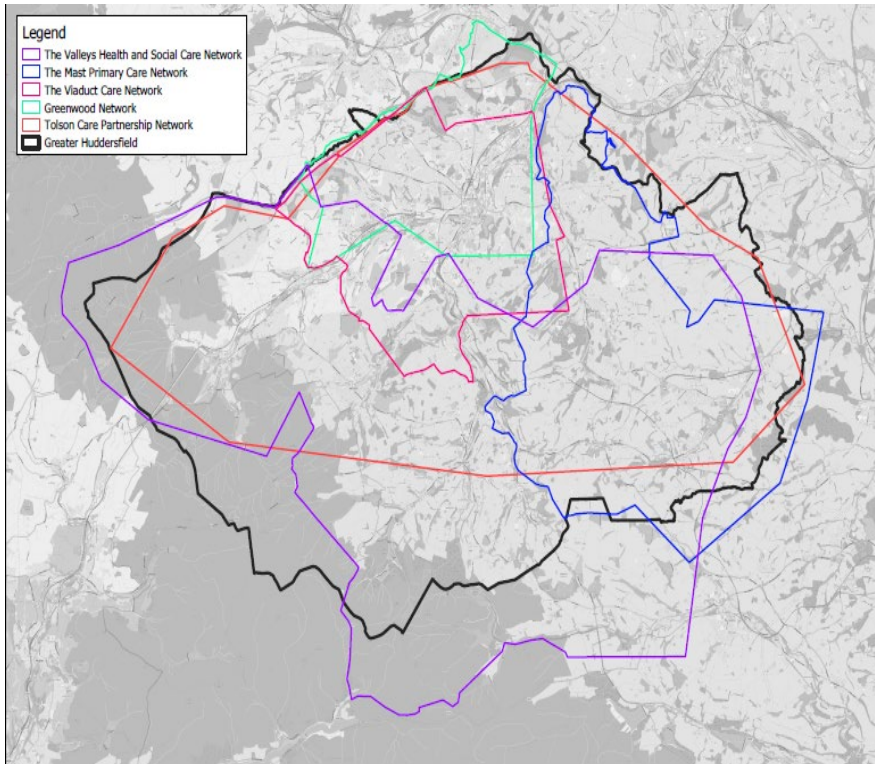
Network Summary	Clinical Director	CCG Primary Care Lead	Practice Code	Practices	List Size (Raw at Jan 2019)	List Size
Tolson Care Partnership	Dr Sarah Milligan	Sarah Rothery	B85659	The Whitehouse Centre	1,479	50,503
			B85060	Greenhead Family Doctors	2,642	
			B85058	Dr Glencross practice	2,540	
			B85062	University Health Centre	15,142	
			B85010	Dalton Surgery	6,949	
			B85024	Waterloo Health Centre	9,572	
			B85660	The Junction Surgery	5,677	
			B85023	Almondbury Surgery	6,502	



Actions	YES	NO
Does this network registration meet all minimum requirements	X	
Is it recommended that PCCC verify this networks registration	X	
Are there outstanding issues Relating to this Network	X	
Are the LMC aware of the outstanding issue	X	
Are there any further Comments:		
Please refer to 'Exceptional Issue (2) – Greenhead Family Doctors (B85060)'		

Actions	YES	NO
Is the Population criteria 30,000 -50,000		X
Does the Network area cover a boundary that makes sense to it:		
• Constituent Practices	X	
• Partners	X	
• Local Community	X	
The network is deemed to be of a viable, sustainable and manageable size. Please refer to 'Exceptional Issue (4) - Network population size criteria'		

Greater Huddersfield CCG Primary Care Networks



Actions	YES	NO	Comments
Primary Care Commissioning Committee is specifically required to approve all PCN registration applications at one time to ensure that:			
100% of its geographical area is included within Primary Care Networks		x	Please refer to ' Exceptional Issue (1) – 100% Geographical Coverage in Greater Huddersfield '
Every constituent practice of a CCG is covered		x	Please refer to ' Exceptional Issue (2) – Greenhead Family Doctors (B85060) '
100% of the registered population is included within a network		x	Please refer to ' Exceptional Issue (3) - Special Allocation
The registered population of each network 30,000 -50,000		x	Please refer to ' Exceptional Issue (4) - Network population size criteria '
Any further comments required			